

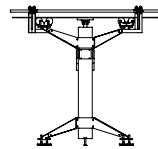
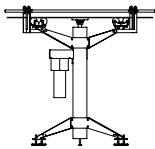
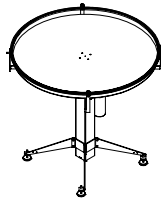
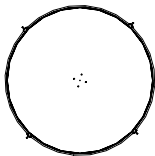


Medium Duty Turntable



Specifications

Top:	12 ga. SST
Top Diameter	36" or 42" diameter
Frame:	Carbon steel, powder coated
Speed:	20 revolutions per minute
Bearings:	1 inch precision bearings
Drive Motor:	1/4 horsepower
Drive Shaft:	1" dia. 303 stainless steel
Elevation:	34" to 36" to bottom of turntable
Electrical Controls:	See Options
Capacity	100 lbs.



The MDT, medium duty turntables are used wherever product accumulation off of a conveyor line is required. Stationary guide rail is Product is For example-

- Horizontal Baggers. Bags of (tortillas) produced on an Ilapak, Doboy, UBE, or other horizontal bagger are accumulated for manual case packing.
- VFFS baggers. Dished turntables are used in combination with an inclined flighted conveyor to accumulate products discharging out of a vertical form fill and seal machine. Products can include chips, cheese

Optional Equipment

Drives

- ◆ 1/3, 1/2 HP
- ◆ Voltage
 - ◆ 110 Volts, 1 phase
 - ◆ 230/460 Volts, 3 phase
 - ◆ 90 Volts DC motor
- ◆ Duty
 - ◆ TEFC
 - ◆ Wash down
 - ◆ Stainless Steel
 - ◆ Inverter Duty
 - ◆ Explosion proof

Electrical Controls

- ◆ Manual Start/Stop Pushbutton Switch
- ◆ Magnetic Starter
- ◆ IEC Starter
- ◆ Variable Frequency Drive
- ◆ DC Speed Controller

Supports

- ◆ Locking Swivel Casters
- ◆ Adjustable feet

Pacific Conveyor Systems

1535 E. Edinger Avenue Santa Ana, CA 92705

Tel: 714-258-1810 Fax: 714-258-2021

e-mail: sales@pacificconveyor.net

www.pacificconveyor.net